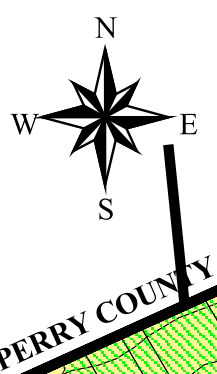
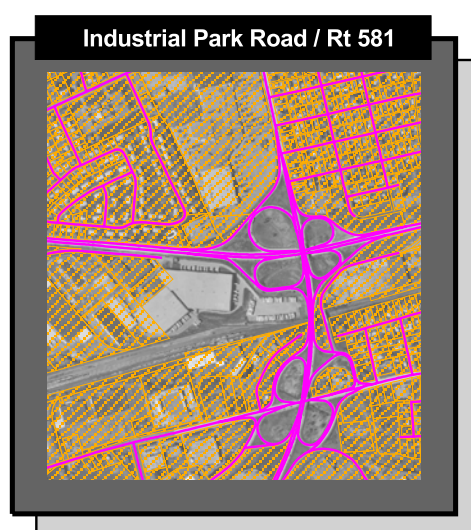
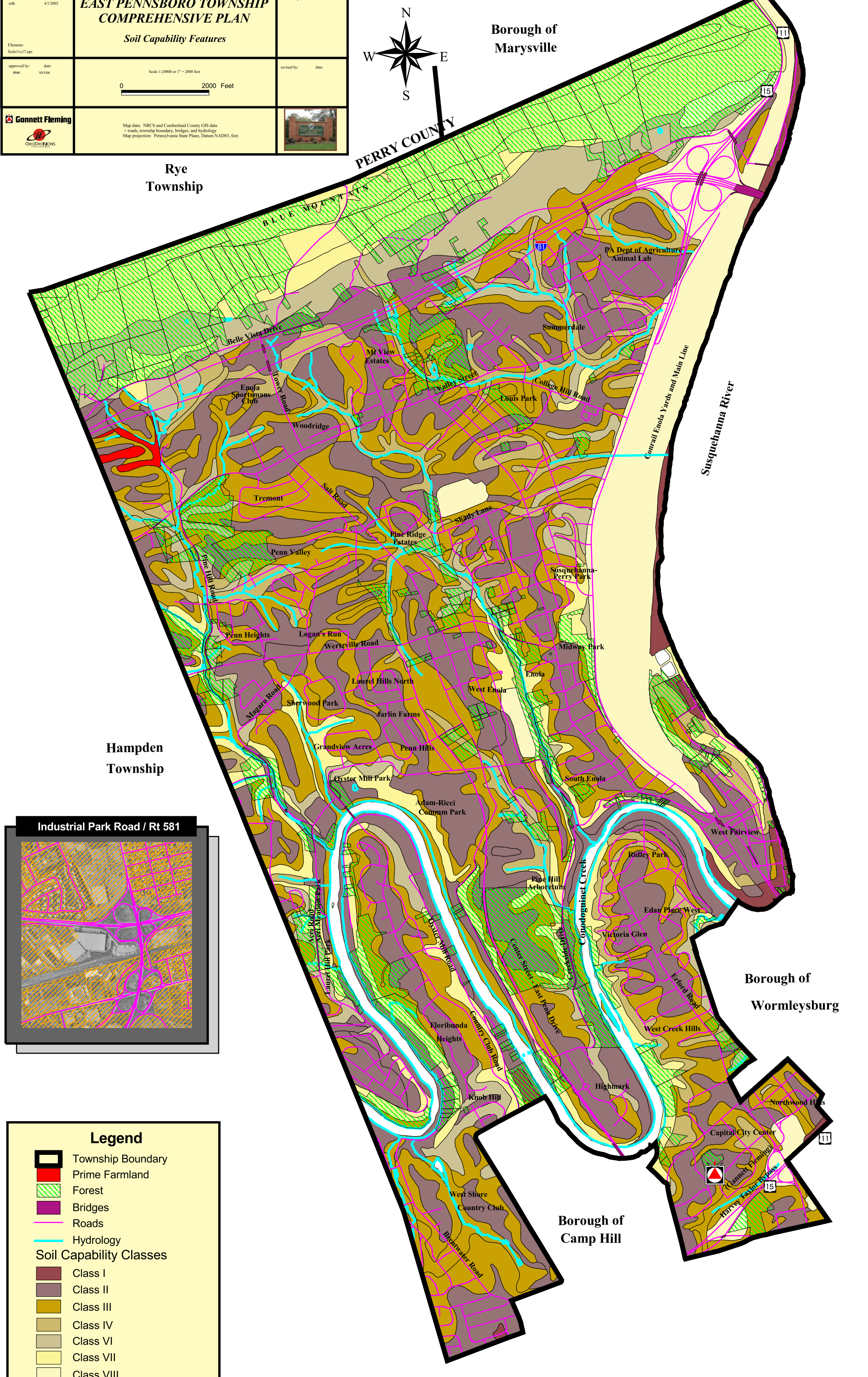


prepared by: mlh	date: 4/1/2002	EAST PENNSBORO TOWNSHIP COMPREHENSIVE PLAN Soil Capability Features	received by:	date:
filename: Soil11x17.eps				
approved by: RNC	date: 10/1/04	Scale 1:24000 or 1" = 2000 feet 	revised by:	date:
		Map data: NRCS and Cumberland County GIS data > roads, township boundary, bridges, and hydrology Map projection: Pennsylvania State Plane, Datum NAD83, feet.		



Borough of
Marysville

Rye
Township



Legend

- Township Boundary
- Prime Farmland
- Forest
- Bridges
- Roads
- Hydrology

Soil Capability Classes

- Class I
- Class II
- Class III
- Class IV
- Class VI
- Class VII
- Class VIII

Borough of
Camp Hill

Borough of
Wormleysburg

