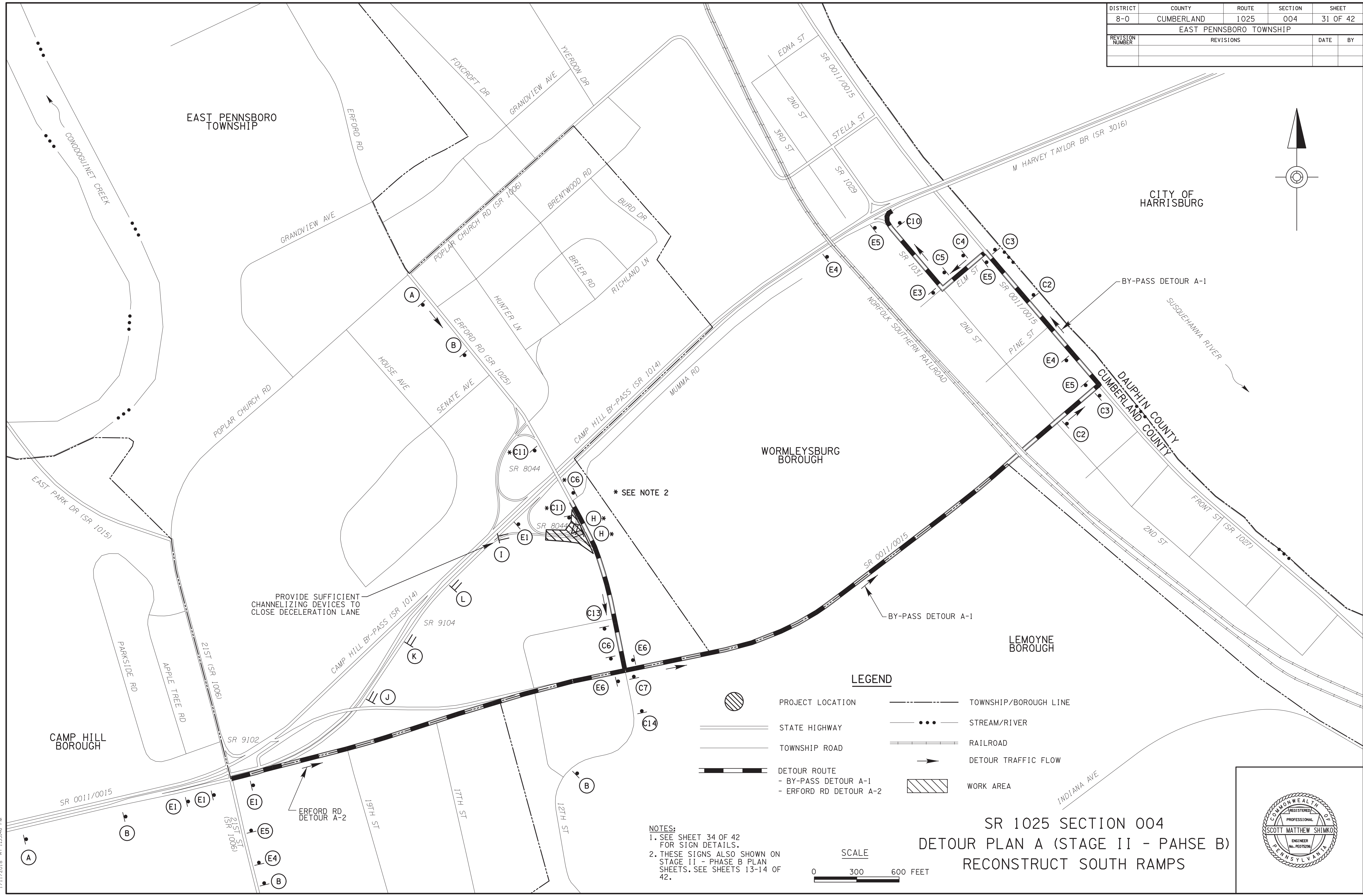
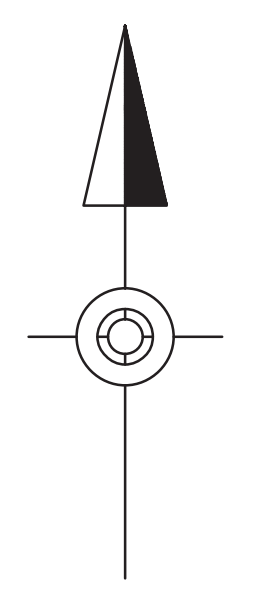


DISTRICT	COUNTY	ROUTE	SECTION	SHEET
8-0	CUMBERLAND	1025	004	31 OF 42
EAST PENNSBORO TOWNSHIP				
REVISION NUMBER	REVISIONS	DATE	BY	



PROVIDE SUFFICIENT CHANNELIZING DEVICES TO CLOSE DECELERATION LANE

* SEE NOTE 2

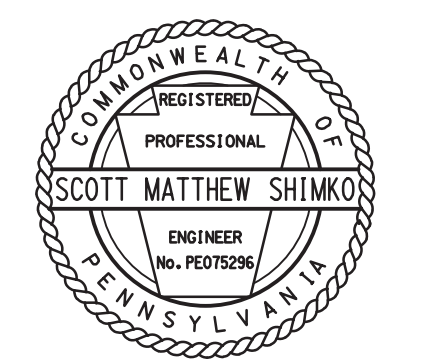
LEGEND

- PROJECT LOCATION
- STATE HIGHWAY
- TOWNSHIP ROAD
- DETOUR ROUTE
 - BY-PASS DETOUR A-1
 - ERFORD RD DETOUR A-2
- TOWNSHIP/BOROUGH LINE
- STREAM/RIVER
- RAILROAD
- DETOUR TRAFFIC FLOW
- WORK AREA

NOTES:
 1. SEE SHEET 34 OF 42 FOR SIGN DETAILS.
 2. THESE SIGNS ALSO SHOWN ON STAGE II - PHASE B PLAN SHEETS. SEE SHEETS 13-14 OF 42.



SR 1025 SECTION 004
 DETOUR PLAN A (STAGE II - PHASE B)
 RECONSTRUCT SOUTH RAMPS



PA 2017\3071\005\CADD\Traffic Control Plan\T0240_3071005.dgn
 1/11/2018 AT 1:53:56 PM